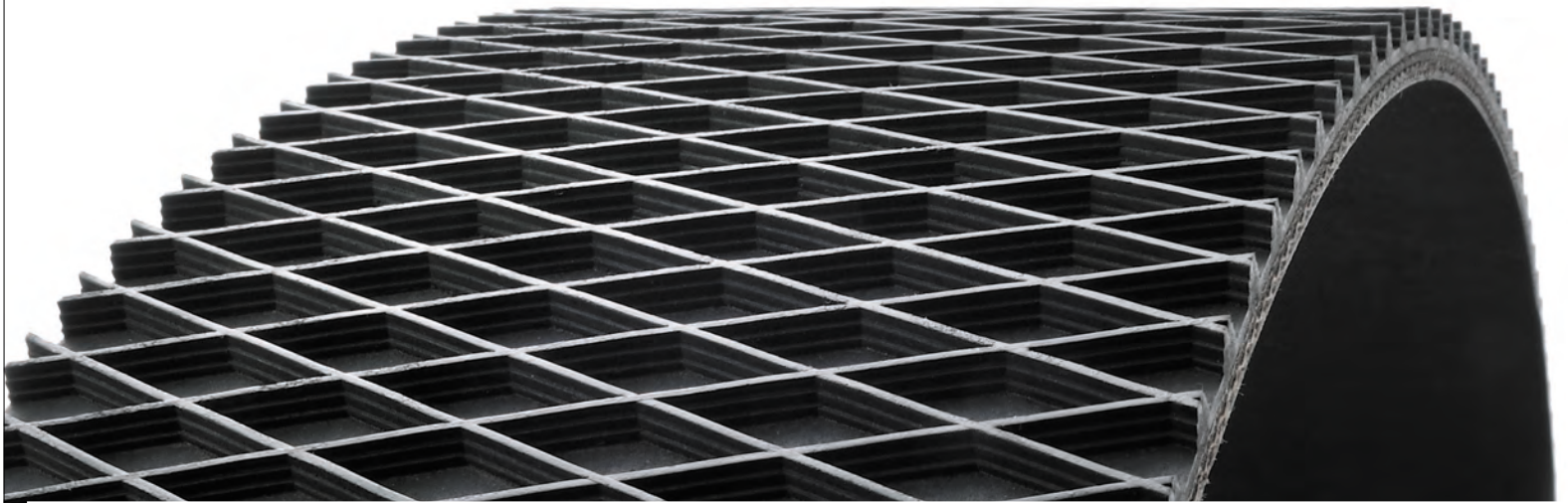


SWR

SAN WU RUBBER
MFG. CO. LTD.



捲草機帶

Round
Baler
Belting



SANWU 

捲草機帶

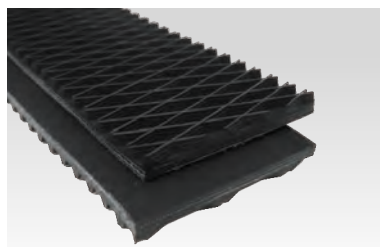
Round Baler Belting

The new generation of SWR Round Baler Belting is engineered with the special designed rubber compound and carcass. The rubber compounds have good adhesion, abrasion resistant and durability in the outdoor environment. The unique designed construction and special production process of carcass gives the belt excellent longitudinal flexibility, traverse stiffness, superior fastener retention, outstanding puncture and tear resistant. SWR Round Baler Belting, with our more than 20 years round baler belting manufacturing experience and latest production technology, gives the belt best performance and lifetime on the field.

SWR新一代捲草機帶採用特殊設計的橡膠配方和心體。橡膠配方提供傑出的粘結力，耐磨耗性和持久的耐候性。特殊的織物結構和心體製造技術使捲草機帶在運轉方向有良好的柔軟度和橫向剛性，以及具有卓越的金屬夾具握持力，耐衝擊和抗撕裂能力。三五橡膠廠超過20年的捲草機帶製造經驗和採用最新的生產技術使SWR捲草機帶具備最優異的性能和使用壽命。

SPECIFICATIONS AND TECHNICAL DATA

3 PLY WEDGEGRIP X LINER BALER BELT



OAG.	8.6mm
COMPOUND	SBR / NR
FABRIC	Synthetic
TEMP. RANGE	-5 - 100°C
WORKING TENSION	50kg/cm
MIN. PULLEY	75mm

3 PLY MINI ROUGH TOP X LINER BALER BELT



OAG.	6.3mm
COMPOUND	SBR / NR
FABRIC	Synthetic
TEMP. RANGE	-5 - 100°C
WORKING TENSION	50kg/cm
MIN. PULLEY	75mm

3 PLY LINER X LINER BALER BELT



OAG.	4.6mm
COMPOUND	SBR / NR
FABRIC	Synthetic
TEMP. RANGE	-5 - 100°C
WORKING TENSION	50kg/cm
MIN. PULLEY	75mm

3 PLY CONTI-CHEVRON X LINER BALER BELT



OAG.	7.6mm
COMPOUND	SBR / NR
FABRIC	Synthetic
TEMP. RANGE	-5 - 100°C
WORKING TENSION	50kg/cm
MIN. PULLEY	75mm



SAN WU RUBBER MFG. CO., LTD.
三五橡膠廠股份有限公司

No. 106, Section 2 Chang Mei Road, Hemei,
Changhua County 50854, Taiwan
50854 台灣彰化縣和美鎮彰美路二段106號
T 886.4.7361445-6
F 886.4.7365900
E global.trade@sanwu.com.tw
www.sanwu.com.tw