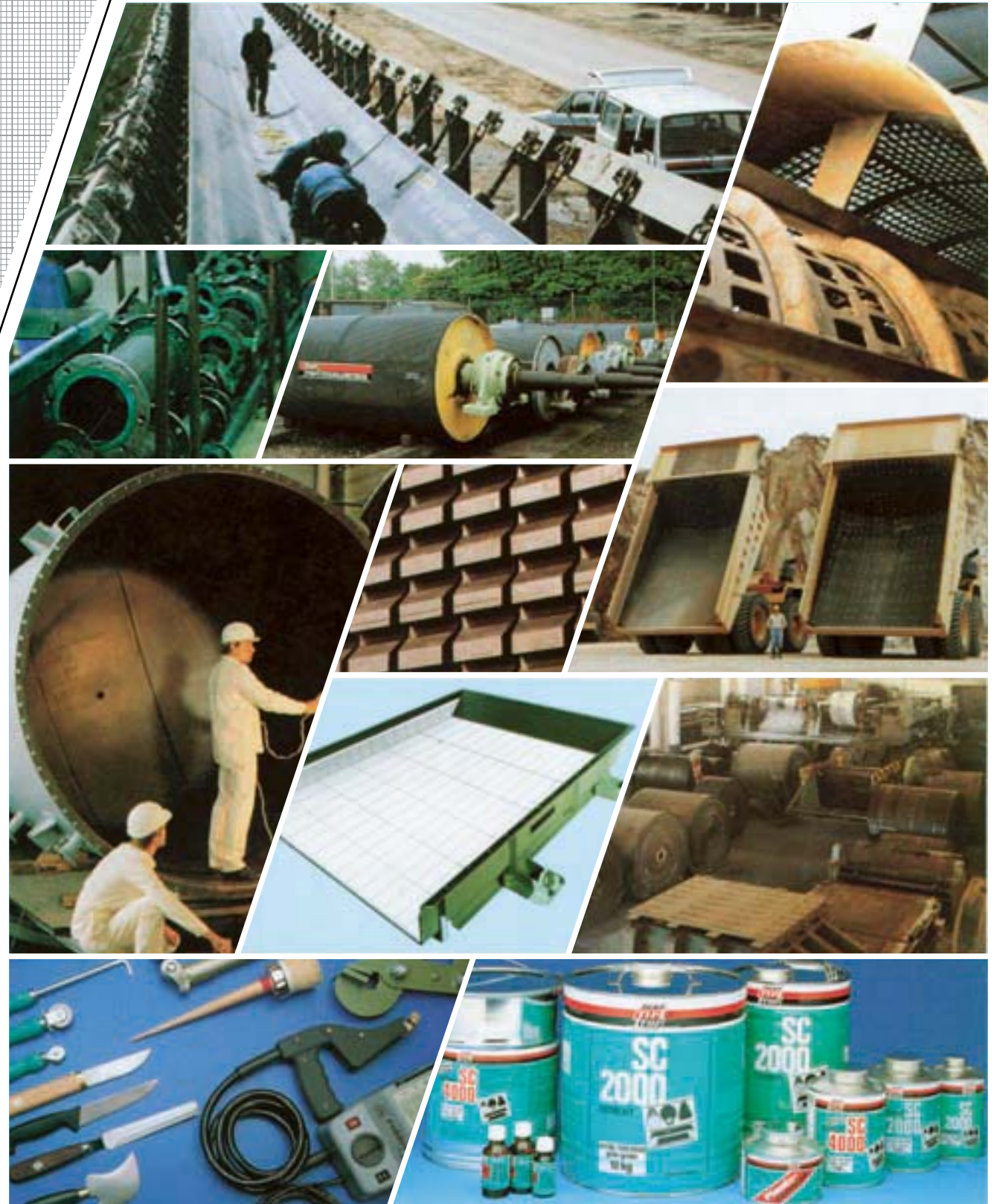


INDUSTRIAL PROGRAMME





REMA CLEAN - GREEN

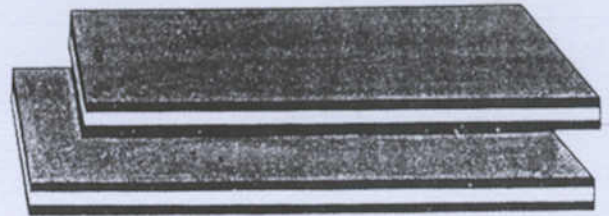
Technical characteristics 標準規格

- Hardness Shore A: 70 ± 5/55 ± 5/70 ± 5 (DIN 53505)
硬度
- Abrasion: b 90 mm³ (DIN 53516)
磨耗量 g 110 mm³ (DIN 53516)
- Resilience: b 40 % (DIN 53512)
彈性 g 70 % (DIN 53512)
- The scraper must not protrude from its support more than 1.5 times its thickness, otherwise it will bend
刮刀伸出部份不可超出刮刀厚度1.5倍，否則會導致刮刀彎曲
- Standard roll length: 10 m 每捲標準長
- Colour: black/green/black
顏色 黑/綠/黑

Fields of application 適用範圍

- 結合刮料橡膠，用於粒狀或
Combi scraper rubber 稍為黏稠或易產生沉澱之物質
for granulated, slightly sticky and washed material
- Excellent cleaning effect 絕佳清潔效果

Ref.No.	Thick-ness mm	Width mm	Weight kg/m
549 8411	15	100	1,62
549 8428	15	120	1,94
549 8435	15	150	2,43
549 8442	15	2000	32,40
549 8459	20	100	2,16
549 8466	20	120	2,59
549 8473	20	150	3,24
549 8497	20	2000	43,20
549 8514	25	120	3,24
549 8521	25	150	4,05
549 8538	25	200	5,40
549 8552	25	2000	54,00
549 8576	30	120	3,89
549 8583	30	150	4,86
549 8590	30	200	6,48
549 8600	30	250	8,10
549 8624	30	2000	64,80
549 8631	40	250	10,80
549 8648	40	2000	86,40
549 8655	50	250	13,50
549 8662	50	2000	108,00





REMA CLEAN - GREY

Technical characteristics

Standard quality 標準規格

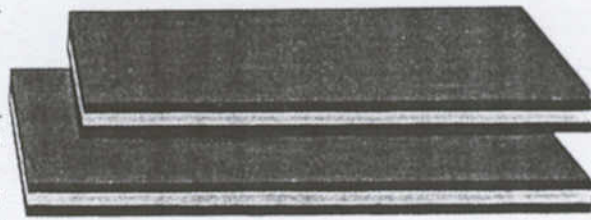
- Hardness Shore A: 85 ± 5/50 ± 5/85 ± 5 (DIN 53505) ^{硬度}
- Abrasion: g/b 140 mm³/140 mm³ (DIN 53516) 磨耗量
- Resilience: g/b 65 %/35 % (DIN 53512) 彈性
- The scraper must not protrude from its support more than 1.5 times its thickness, otherwise it will bend
- Standard roll length: 10 m 每捲標準長
- Colour: black/grey/black/V-quality: black/black/black 顏色 黑/灰/黑 V級 黑/黑/黑

Fields of application

- 結合刮料橡膠，用於粘稠及泥濘之物質
- Combi scraper rubber for sticky and muddy material
- Excellent cleaning effect 絕佳清潔效果

刮刀伸出部份不可超出刮刀厚度1.5倍，否則會導致刮刀彎曲

Ref.No.	Thick-ness mm	Width mm	"V"- Quality	Weight kg/m
549 9269	15	100	-	1,76
549 9276	15	120		2,11
549 9283	15	150		2,63
549 9300	15	2000		35,10
549 9317	20	100		2,34
549 9324	20	120		2,81
549 9331	20	150		3,51
549 9355	20	2000		46,80
549 9379	25	120		3,51
549 9386	25	150		4,39
549 9403	25	200		5,85
549 9410	25	250		7,31
549 9434	25	2000		58,50
549 9458	30	120		4,21
549 9465	30	150		5,27
549 9472	30	200		7,02
549 9489	30	250		8,78
549 9506	30	2000		70,20
549 9513	40	250		11,70
549 9520	40	2000		93,60
549 9537	50	250		14,63
549 9544	50	2000		117,00
549 8703	15	100	.	2,13
549 8710	15	120	.	2,56
549 8727	15	150	.	3,20
549 8741	15	2000	.	4,60
549 8758	20	100	.	2,84
549 8765	20	120	.	3,41
549 8772	20	150	.	4,26
549 8796	20	2000	.	56,80
549 8813	25	120	.	4,23
549 8820	25	150	.	5,29
549 8837	25	200	.	7,05
549 8844	25	250	.	8,81
549 8851	25	2000	.	70,50
549 8875	30	120	.	5,04
549 8882	30	150	.	6,30
549 8899	30	200	.	8,40
549 8909	30	250	.	10,50
549 8923	30	2000	.	84,00





REMA CLEAN 60

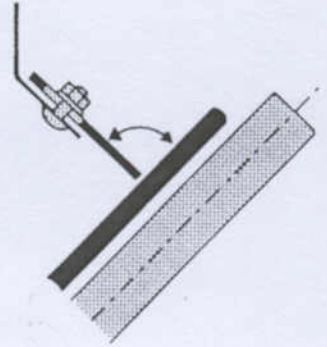
Technical characteristics 標準規格

- Specific weight: 1,120 g/cm³ (DIN 53479) 詳細重量
- Hardness Shore A: 60 ± 5 (DIN 53505) 硬度
- Abrasion: 90 mm³ (DIN 53516) 磨耗量
- Resilience: 42 % (DIN 53512) 彈性
- Standard roll length: 10 m 每捲標準長
- Colour: black 顏色 黑色

Ref.No.	Thick-ness mm	Width mm	Weight kg/m
549 6987	5	100	0,56
549 6994	5	120	0,67
549 7003	5	2000	11,20
549 7254	7	100	0,78
549 7261	7	120	0,94
549 7278	7	2000	15,68
549 7010	8	100	0,89
549 7027	8	120	1,08
549 7034	8	2000	17,92
549 7065	10	120	1,34
549 7072	10	150	1,68
549 7089	10	2000	22,40
549 7106	15	150	2,52
549 7113	15	200	3,36
549 7137	15	2000	33,60
549 7151	20	150	3,36
549 7168	20	200	4,48
549 7182	20	2000	44,80
549 7209	30	200	6,72
549 7216	30	250	8,40
549 7247	30	2000	67,20

Fields of application 適用範圍

- Scraper and skirting rubber for granulated, non-sticky material
刮料器及裙邊橡膠，用於粒狀、非黏稠之物質





REMA CLEAN 70

Technical characteristics

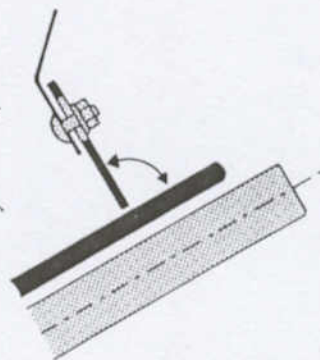
Standard quality 標準規格

- Specific weight: 1,100 g/cm³ (DIN 53479) 詳細重量
- Hardness Shore A: 60 ± 5 (DIN 53505) 硬度
- Abrasion: 50 mm³ (DIN 53516) 磨耗量
- Resilience: 50 % (DIN 53512) 彈性
- Standard roll length: 10 m 每捲標準長
- Colour: black/food quality: white
顏色 黑色 食品級 白色

Fields of application

適用範圍

- Scraper and skirting rubber for granulated, non-sticky material
刮料器及裙邊橡膠、用於粒狀、非黏稠之物質



Ref.No.	Thick-ness mm	Width mm	"V"- Quality	Weight kg/m
550 2527	5	100		0,55
550 2534	5	120		0,66
550 2541	5	2000		11,00
550 2606	7	100		0,77
550 2613	7	120		0,92
550 2637	7	2000		15,40
549 6815	10	120		1,32
549 6822	10	150		1,65
549 6839	10	2000		22,00
549 6853	15	150		2,48
549 6860	15	200		3,30
549 6884	15	2000		33,00
549 6901	20	150		3,30
549 6918	20	200		4,40
549 6925	20	2000		44,00
549 6956	30	200		6,60
549 6963	30	2000		66,00
549 7319	8	100	*	1,12
549 7326	8	120	*	1,34
549 7333	8	2000	*	22,40
549 7364	10	120	*	1,68
549 7371	10	150	*	2,10
549 7388	10	2000	*	28,00
549 7412	15	150	*	3,15
549 7429	15	200	*	4,20
549 7436	15	2000	*	42,00
549 7450	20	150	*	4,20
549 7467	20	200	*	5,60
549 7474	20	2000	*	56,00
549 7498	30	200	*	8,40
549 7508	30	250	*	10,50
549 7515	30	2000	*	84,00



CONVEYING 運送

SCRAPER RUBBER AND SKIRT RUBBER

刮料及裙邊橡膠



REMA CLEAN 70

Ref.No.	Thick- ness mm	Width mm	Oil- resist.	Food Quality	"S"- Quality	Weight kg/m
549 7807	10	120		*		1,46
549 7814	10	150		*		1,83
549 7821	10	2000		*		24,40
549 7845	15	150		*		2,75
549 7852	15	200		*		3,66
549 7869	15	2000		*		36,60
549 7883	20	150		*		3,66
549 7890	20	200		*		4,88
549 7900	20	2000		*		48,80
549 7924	30	200		*		7,32
549 7931	30	250		*		9,15
549 7948	30	2000		*		73,20
549 8019	10	120	*			1,39
549 8026	10	150	*			1,74
549 8033	10	2000	*			23,20
549 8057	15	150	*			2,61
549 8064	15	200	*			3,48
549 8071	15	2000	*			34,80
549 8095	20	150	*			3,48
549 8105	20	200	*			4,64
549 8112	20	2000	*			46,40
549 8143	30	200	*			6,96
549 8150	30	250	*			8,70
549 8167	30	2000	*			69,60
549 8208	10	120			*	1,51
549 8215	10	150			*	1,89
549 8222	10	2000			*	25,20
549 8246	15	150			*	2,84
549 8253	15	200			*	3,78
549 8260	15	2000			*	37,80
549 8284	20	150			*	3,78
549 8291	20	200			*	5,04
549 8301	20	2000			*	50,40
549 8325	30	200			*	7,56
549 8332	30	250			*	9,45
549 8349	30	2000			*	75,60

SCRAPER BAR AL-01

Technical characteristics

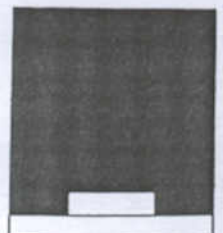
- see REMA LINE 70

Fields of application 適用範圍

- HD Scraper for strongly caking material and wide conveyor belts

HD刮料器，用於易結塊物質及寬度大之輸送皮帶

Ref.No.	Description	Height mm	Width mm	Length mm
539 0117	Scraper bar AL-01	80	70	2500





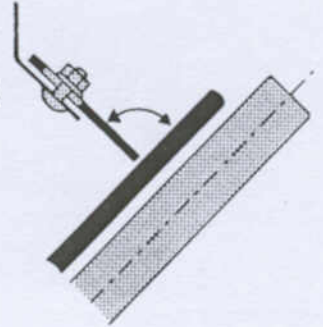
REMA SKIRT 40

Technical characteristics Standard quality

- Specific weight: 1,000 g/cm³ (DIN 53479) 詳細重量
- Hardness Shore A: 55 ± 5 (DIN 53505) 硬度
- Abrasion: 110 mm³ at 5 N (DIN 53516) 磨耗量
- Resilience: 70 % (DIN 53512) 彈性
- Standard roll length: 10 m 每捲標準長
- Colour: green
顏色 綠色

Fields of application 適用範圍

- Skirting rubber and scraper for washed material
適合水洗物之裙邊橡膠及刮料器



Ref.No.	Thick- ness mm	Width mm	Weight kg/m
550 1023	5	80	0,40
550 1030	5	100	0,50
550 1047	5	2000	10,00
549 6011	6	80	0,48
549 6028	6	100	0,60
549 6035	6	2000	12,00
550 1102	7	80	0,56
550 1119	7	100	0,70
550 1126	7	120	0,84
550 1133	7	150	1,05
550 1157	7	2000	14,00
549 6059	8	80	0,64
549 6066	8	100	0,80
549 6073	8	120	0,96
549 6080	8	150	1,20
549 6097	8	2000	16,00
549 6114	10	100	1,00
549 6121	10	120	1,20
549 6138	10	150	1,50
549 6145	10	200	2,00
549 6152	10	2000	20,00
549 6176	12	100	1,20
549 6183	12	120	1,44
549 6190	12	150	1,80
549 6200	12	200	2,40
549 6217	12	2000	24,00
549 6248	15	150	2,25
549 6255	15	200	3,00
549 6279	15	2000	30,00
549 6303	20	150	3,00
549 6310	20	200	4,00
549 6334	20	2000	40,00
549 6358	25	150	3,75
549 6365	25	200	5,00
549 6389	25	2000	50,00



REMA SKIRT 50

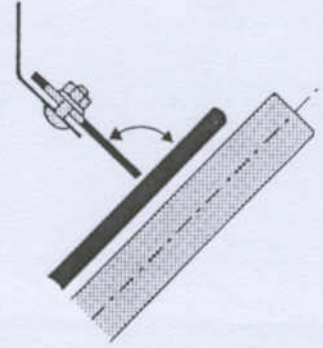
Technical characteristics Standard quality

- Specific weight: 1,080 g/cm³ (DIN 53479) 詳細重量
- Hardness Shore A: 50 ± 5 (DIN 53505) 硬度
- Abrasion: 130 mm³ at 5 N (DIN 53516) 磨耗量
- Resilience: 65 % (DIN 53512) 彈性
- Standard roll length: 10 m 每捲標準長
- Colour: orange
顏色 橘色

Ref.No.	Thick- ness mm	Width mm	Weight kg/m
550 1827	5	80	0,43
550 1834	5	100	0,54
550 1841	5	2000	10,80
549 6413	6	80	0,52
549 6420	6	100	0,65
549 6437	6	2000	12,96
550 1906	7	100	0,76
550 1913	7	120	0,91
550 1920	7	150	1,13
550 1937	7	2000	15,12
549 6451	8	80	0,69
549 6468	8	100	0,86
549 6475	8	120	1,04
549 6482	8	150	1,30
549 6499	8	2000	17,28
549 6516	10	100	1,08
549 6523	10	120	1,30
549 6530	10	150	1,62
549 6547	10	200	2,16
549 6554	10	2000	21,60
549 6585	12	100	1,30
549 6592	12	120	1,56
549 6602	12	150	1,94
549 6619	12	200	2,59
549 6626	12	2000	25,92
549 6640	15	150	2,43
549 6657	15	200	3,24
549 6671	15	2000	32,40
549 6695	20	150	3,24
549 6705	20	200	4,32
549 6729	20	2000	43,20

Fields of application 適用範圍

- Skirting and scraper rubber for washed, sticky material
適合水洗、黏稠物質之裙邊及刮料橡膠





CONVEYING 運送

LOW FRICTION IMPACT BARS

低磨耗衝擊BARS



REMA SLIDE BARS

Technical characteristics

橡膠及UHMW Polyethylene之結合

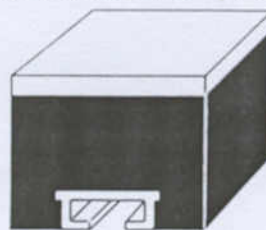
- Combination of rubber and UHMW polyethylene
- Low friction between conveyor belt and impact bar
- Distance between conveyor belt and impact bars must be 10 to 20 mm (when conveyor belt is unloaded) 在輸送帶和衝擊桿間，可維持低磨耗輸送帶及衝擊桿間之距離必須保持10-20mm(當輸送帶為無負載時)

Fields of application 適用範圍

在落料及轉運點處，可保皮帶並防止衝擊

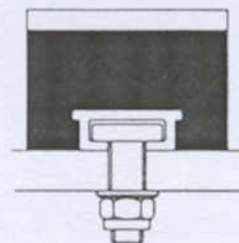
- At material feeding and transfer points as impact protection for conveyor belts
- For fine materials (good sealing effect when used in conjunction with REMA SKIRT)
- Replacement of impact idlers 衝擊惰輪之更換微細物質 (當使用瑞馬裙邊擋板，有良好的密閉效果)

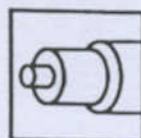
Ref.No.	Description	Height mm	Length mm	Width mm
539 0605	KG-02/PE	52	1.220	100
539 0612	KG-03/PE	80	1.220	100
539 0629	KG-04/PE	100	1.220	100



The REMA SLIDE BARS are supplied as a set, complete with 4 TT fasteners (M16 x 60) for each bar.

瑞馬SLIDE BARS是以整組方式供應，每個BAR並含4個TT螺母





REMA SLEEVE

Rubber sleeves for carrying and return idlers 承載及回程惰輪橡膠套管

Rubber quality: REMA LINE 25 with CN bonding layer

Technical characteristics

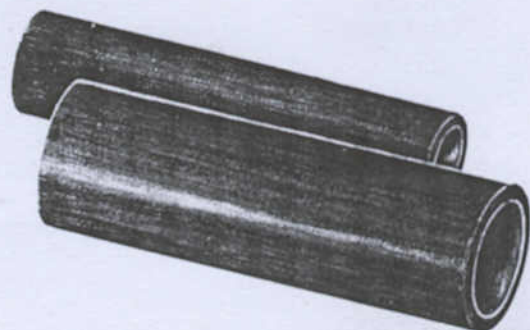
- Hardness Shore A: 35 ± 5 (DIN 53505) 硬度
- Abrasion: 95 mm³ at 5 N (DIN 53516) 磨耗量
- Resilience: 70 % (DIN 53512) 彈性

Fields of application 適用範圍

- against caking and corrosion 防止結塊及腐蝕

Black - 7 mm thick

Idler Ø	800 mm	1000 mm	1300 mm
63,5 mm	537 0027	537 0120	537 0223
80,0 mm	537 0034	537 0137	537 0230
89,0 mm	537 0041	537 0144	537 0247
108,0 mm	537 0058	537 0151	537 0254
133,0 mm	537 0065	537 0168	537 0261
150,0 mm	537 0072	537 0175	537 0278



White - 7 mm thick

Idler Ø	800 mm	1000 mm	1300 mm
63,5 mm	537 0924	537 1026	537 1129
80,0 mm	537 0931	537 1033	537 1136
89,0 mm	537 0948	537 1040	537 1143
108,0 mm	537 0955	537 1057	537 1150
133,0 mm	537 0962	537 1064	537 1167

Rubber quality: VSB - E 40
with CN bonding layer
Technical characteristics

- 硬度
- Hardness Shore A: 40 ± 5 (DIN 53505)
 - Abrasion: 150 mm³ (DIN 53516) 磨耗量
 - Resilience: 60 % (DIN 53512) 彈性

Black - 7 mm thick

Idler Ø	800 mm	1000 mm	1300 mm
2 inches	537 0010	537 0113	537 0216
3 inches	537 0089	537 0182	537 0285
4 inches	537 0096	537 0199	537 0292
5 inches	537 0106	537 0209	537 0302
6 inches	537 0072	537 0175	537 0278

VSB - E 40 black

Ref.No.	Dimensions
537 5022	63,5 x 2750 x 7 mm
537 5039	80 x 2750 x 7 mm
537 5046	89 x 2750 x 7 mm
537 5053	108 x 2750 x 7 mm
537 5060	133 x 2750 x 7 mm
537 5266	2" x 800 x 7 mm
537 5273	2" x 1000 x 7 mm
537 5280	2" x 1300 x 7 mm
537 5297	3" x 800 x 7 mm
537 5307	3" x 1000 x 7 mm
537 5314	3" x 1300 x 7 mm
537 5321	4" x 800 x 7 mm
537 5338	4" x 1000 x 7 mm
537 5345	4" x 1300 x 7 mm
537 5352	5" x 800 x 7 mm
537 5369	5" x 1000 x 7 mm
537 5376	5" x 1300 x 7 mm
537 5383	150 x 800 x 7 mm
537 5390	150 x 1000 x 7 mm
537 5400	150 x 1300 x 7 mm

Rubber quality: REMA LINE 25 orange with CN bonding layer

Technical characteristics

- Hardness Shore A: 35 ± 5 (DIN 53505) 硬度
- Abrasion: 95 mm³ at 5 N (DIN 53516) 磨耗量
- Resilience: 70 % (DIN 53512) 彈性

Orange - 7 mm thick

Idler Ø	800 mm	1000 mm	1300 mm
63,5 mm	537 1215	537 1318	537 1411
80,0 mm	537 1239	537 1332	537 1435
89,0 mm	537 1246	537 1349	537 1442
108,0 mm	537 1260	537 1363	537 1466
133,0 mm	537 1284	537 1387	537 1480
150,0 mm	537 1291	537 1394	537 1497

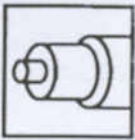
Orange - 7 mm thick

Idler Ø	800 mm	1000 mm	1300 mm
2 inches	537 1208	537 1301	537 1404
3 inches	537 1222	537 1325	537 1428
4 inches	537 1253	537 1356	537 1459
5 inches	537 1277	537 1370	537 1473



CONVEYING 運送

BELT IDLER SLEEVES 惰輪套管



REMA SLEEVE 瑞馬套管

Rubber sleeves for carrying idlers 承載惰輪橡膠管

Anti-impact sleeves

for carrying idlers at transfer points and feeding zones 用於轉運點及落料區之承載惰輪

Thickness: 20 mm

Rubber quality: REMA LINE 25 with CN bonding layer

Fields of application 適用範圍

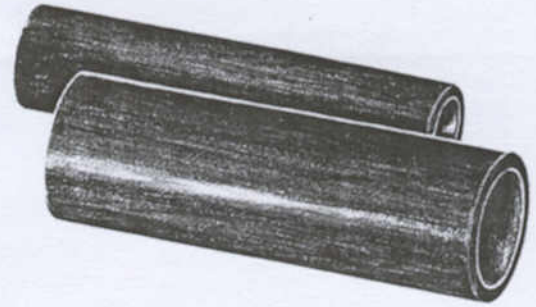
Technical characteristics

- Hardness Shore A: 35 ± 5 (DIN 53505) 硬度
- Abrasion: 95 mm³ at 5 N (DIN 53516) 磨耗量
- Resilience: 70 % (DIN 53512) 彈性

- against impact, caking and corrosion 防止衝擊、結塊及腐蝕

Black - 20 mm thick

Idler Ø	800 mm	1000 mm	1300 mm
63,5 mm	537 4322	537 4425	537 4528
80,0 mm	537 4339	537 4432	537 4535
89,0 mm	537 4346	537 4449	537 4542
108,0 mm	537 4353	537 4456	537 4559
133,0 mm	537 4360	537 4463	537 4566
150,0 mm	537 4377	537 4470	537 4573



Anti-corrosion rubber sleeves

耐腐蝕橡膠管

Rubber quality: KSB - E 60 with CN bonding layer

Fields of application 適用範圍

Technical characteristics

- Hardness Shore A: 60 ± 5 (DIN 53505) 硬度
- Abrasion: 100 mm³ (DIN 53516) 磨耗量
- Resilience: 42 % (DIN 53512) 彈性

- against corrosion and wear 耐腐蝕及磨損

KSB - E 60 black

Ref.No.	Dimensions
537 5125	63,5 x 2750 x 4 mm
537 5132	80 x 2750 x 4 mm
537 5149	89 x 2750 x 4 mm
537 5156	108 x 2750 x 4 mm
537 5163	133 x 2750 x 4 mm

Ref.No.	Dimensions
537 3017	50 x 800 x 4 mm
537 3079	150 x 800 x 4 mm
537 3110	50 x 1000 x 4 mm
537 3172	150 x 1000 x 4 mm
537 3206	50 x 1300 x 4 mm
537 3275	150 x 1300 x 4 mm



Mounting adapters 衝擊護套

Ref.No.	Idler Ø
595 2421	63,5 mm
595 2438	80,0 mm
595 2445	89,0 mm
595 2469	108,0 mm
595 2483	133,0 mm
595 2490	150,0 mm

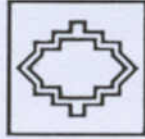
Fields of application

- For quick and easy mounting of the sleeves we recommend our mounting device Ref.No. 596 7478 consisting of one mounting unit each 595 2421 - 595 2490, the corresponding fastening strap and one pedal operated air injection device with flexible hose

為求快速及簡便安裝橡膠管，我們建議您使用我們的設備Ref. No. 596 7478，包含595-2421到 595-2490 各一組設備及合適的夾緊金屬環及一個帶有空氣注入裝置之軟管踏板。

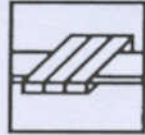
BELT CARE

皮帶保養



**REMA REP, REMA SPLICE -
COLD VULCANISATION**

冷硫化



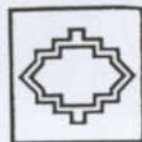
**REMA SPLICE, REMA PRESS -
HOT VULCANISATION**

熱硫化



**REMA CLEAT -
RUBBER CLEATS**

橡膠擋板



REMA REP

Belt-Repair Patches 皮帶修補片

Round patches 圓形補片

Standard Quality Ref.No.	"V"-Quality Ref.No.	Size	Ø mm	Pieces/ Carton
530 7052	530 8051	00	50	10
530 7083	530 8082	1	80	10
530 7124	530 8123	3	120	10



Rhomboid patches 菱形補片

Standard Quality Ref.No.	"V"-Quality Ref.No.	Size	Dimensions mm	Pieces/ Carton
530 7519	530 8518	1	160x130	5
530 7526	530 8525	2	260x200	5
530 7533	530 8532	3	360x270	5



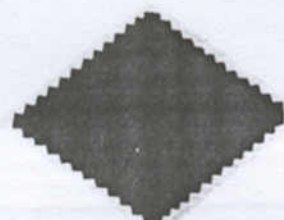
EP 160 - Fabric reinforced repair strips 布層加強修補條
 for the repair of longitudinal tears in fabric ply and steelcord belts
 縱向布層撕裂及鋼索皮帶修理

Standard Quality Ref.No.	"V"-Quality Ref.No.	Dimensions mm
531 5738	531 6737	100x10000
531 5745	531 6744	150x10000
531 5752	531 6751	220x10000
531 5769	—	300x10000
531 5790	—	400x10000



EP 160 - Fabric reinforced rhomboid patches
 加強布菱形補片

Standard Quality Ref.No.	"V"-Quality Ref.No.	Size	Ø Damage	Dimensions mm	Pieces/ Carton
530 5511	530 9517	1	up to 15 mm	160x130	5
530 5528	530 9524	2	up to 40 mm	260x200	5
530 5535	530 9531	3	up to 60 mm	360x270	5



* Note:

"V"-Quality = self-extinguishing and anti-static
 自熄及抗靜電

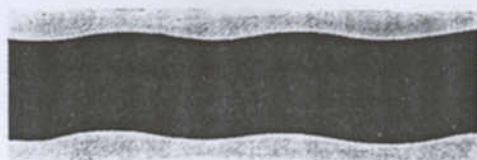


REMA REP

Cover strip 面膠修補條

for cold splices on carrying and pulley side
 承載及滾輪側之冷接

Standard Quality Ref.No.	"V"- Quality Ref.No.	Dimensions mm
532 7025	532 8024	100x10000



Number patches 數字補片

for marking of belt 將皮帶做記號

Standard Quality Ref.No.	Dimensions mm
530 7746	Ø 40



Repair strips 修補條

Standard Quality Ref.No.	"V"- Quality Ref.No.	Dimensions mm
531 7705	531 8704	35x10000
531 7712	531 8711	50x10000
531 7729	531 8728	70x10000
531 7736	531 8735	100x10000
531 7743	531 8742	150x10000
531 7750	531 8759	220x10000
531 7767	531 8766	300x10000
531 7798	531 8797	400x10000





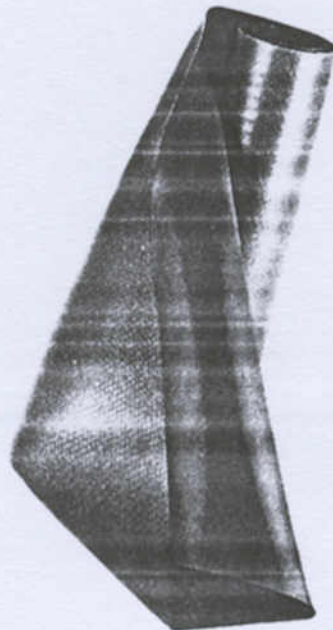
REMA REP

Rubber Sheetting
 with CN-bonding layer
 for belt repair 帶有CN黏結層之橡膠紙，
 以做為皮帶修補之用

Standard Quality Ref.No.	"V"-Quality Ref.No.	Dimensions mm
522 0201	522 1808	1 x500x10000
522 0218	522 1815	1,5x500x10000
522 0225	522 1822	2 x500x10000
522 0232	522 1839	3 x500x10000
522 0249	522 1846	4 x500x10000
522 0256	522 1853	5 x500x10000
522 0263	—	6 x500x10000
522 0270	—	7 x500x10000
522 0287	—	8 x500x10000

Repair fabric EP 100
 with CN bonding layer on both sides
 for belt repair 二面CN黏接層之EP100修補布層

Ref.No.	Dimensions/mm
522 0500	1,8x500x 1000
522 0751	1,8x500x10000

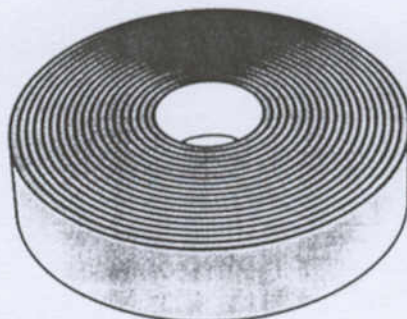




REMA REP

Filler rubber
 with CN-bonding layer on both sides 二面CN黏接層充填膠

Standard Quality Ref.No.	"V"-Quality Ref.No.	Dimensions mm
528 5181	528 5686	1,5x 50x10000
528 5325	528 5727	3 x 50x10000
528 5167	528 5693	1,5x500x10000
528 5466	528 5758	3 x500x10000



CN Bonding Rubber CN黏結膠

Ref.No.	Dimensions/mm
528 5208	0,5 x 500 x 10.000

Hardening Paste 硬化劑
 (to be used with SC 2000/SC 4000)

Ref.No.	Description	Contents
525 0642	Hardening Paste	1 kg



Application: Filler for small rubber cover damages, cracks, joints of linings and gaps in conveyor belt splices.

小部份受損面之充填修補，及包括傳送帶龜裂、內層及裂縫之接合。



REMA SPLICE

Cement SC 2000 SC2000粘著劑
for conveyor belt repairs and splices 用於輸送皮帶之修理與接合

Ref.No.	Description	Contents
525 2011	SC 2000 green	0,5 kg
525 2028	SC 2000 green	1 kg
525 4002	SC 2000 green	6 kg
525 4019	SC 2000 green	12 kg
525 2059	SC 2000 green	200 l
525 2152	SC 2000 black	0,5 kg
525 2169	SC 2000 black	1 kg
525 4026	SC 2000 black	6 kg
525 4033	SC 2000 black	12 kg
525 2190	SC 2000 black	200 l
525 2231	SC 2000 white	0,5 kg
525 2248	SC 2000 white	1 kg
525 4040	SC 2000 white	6 kg
525 4057	SC 2000 white	12 kg
525 1036	Hardener UT-R 20	20 g
525 1043	Hardener UT-R 20	40 g



Cement SC 4000 SC4000粘著劑
without chlorinated hydrocarbons - inflammable 不含氯碳化氫-易燃

Ref.No.	Description	Contents
525 2554	SC 4000 green	350 g
525 2509	SC 4000 green	0,7 kg
525 2516	SC 4000 green	4,5 kg
525 2592	SC 4000 black	350 g
525 2602	SC 4000 black	0,7 kg
525 2619	SC 4000 black	4,5 kg
525 1122	Hardener E 40	15 g
525 1067	Hardener E 40	30 g



Liquid Neoprene 液態合成橡膠
for belt-maintenance 皮帶維修用
● ageing protection for rubber covers 防止面膠老化之用

Ref.No.	Description	Contents
593 5039	Liquid Neoprene	6 kg
593 5046	Liquid Neoprene	12 kg

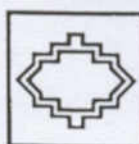


Cleaning fluids 清潔液
for rubber and metal 用於橡膠及金屬之清潔

Ref.No.	Description	Contents
595 9077	TIP TOP Cleaning fluid	250 ml
595 9022	TIP TOP Cleaning fluid	800 ml
595 9084	TIP TOP Cleaning fluid	5 l
595 9091	TIP TOP Cleaning fluid	10 l
595 9118	Cleaning fluid R4 *	250 ml
595 9125	Cleaning fluid R4 *	800 ml
595 9132	Cleaning fluid R4 *	5 l
595 9149	Cleaning fluid R4-Spray	500 ml



* without chlorinated hydrocarbons - inflammable
不含氯碳化氫-易燃



REMA REP

PVC-belt cover sheeting, yellow 黄色PVC皮帶面膠片

Ref.No.	Dimensions/mm
532 0053	1 x 500 x 10000
532 0060	1,5 x 500 x 10000
532 0077	2 x 500 x 10000

PVC-belt cover strip, yellow 黄色PVC皮帶面膠條
 fabric reinforced

Ref.No.	Dimensions/mm
532 0084	2 x 1500 x 100

PVC-belt filler sheeting, yellow 黄色PVC充填膠片

Ref.No.	Dimensions/mm
532 0091	1,5 x 210 x 10000

PVC-belt repair strips, yellow 黄色PVC槽邊膠帶修補條
 with chamfered edges

Ref.No.	Dimensions/mm
532 3517	1,5 x 50 x 10000
532 3531	1,5 x 100 x 10000
532 3555	1,5 x 150 x 10000

Bonding system PVC皮帶粘著劑
 for PVC-belts

Ref.No.	Description	Contents
532 3270	Plastic Cement	0,5 kg
532 3311	Plastic Cement	12 kg
525 1036	Hardener UT-R 20,	20 g
525 1043	Hardener UT-R 20,	40 g





REMA REP

T2 - COMPOUND REPAIR SYSTEM T2組合式修補工具

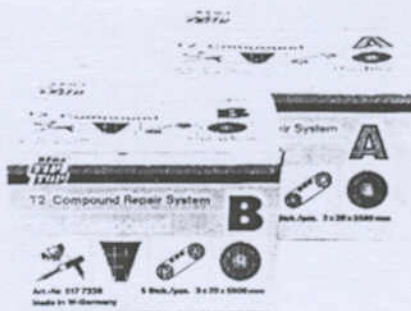
Fields of application

受損輸送帶面膠及縱裂之修補

- Repair of rubber cover damages and length rips in conveyor belts
- Filling of gaps and joints in rubber linings and laggings
- Repair of rubber tracks of special vehicles 特殊車輛橡膠軌道之修理
裂縫之充填及橡膠內層和包膠之接合

T2 - Products

Ref.No.	Description	Contents
517 7323	T2-Compound A	2 kg (5 rolls - 3x20x5500 mm)
517 7330	T2-Compound B	2 kg (5 rolls - 3x20x5500 mm)
517 7347	T2-Compound A - rope	5 kg
517 7354	T2-Compound B - rope	5 kg
517 7361	T2-Solution A	1 kg
517 7378	T2-Solution B	1 kg
517 9008	T2-Solution A4 CFC-free	700 g
517 9015	T2-Solution B4 CFC-free	700 g
517 7402	T2-Cleaning rubber	1 kg (5 rolls - 3x18x3000 mm)
517 7419	T2-Cleaning rubber - rope	5 kg



T2 - Extruder 膠槍

Ref.No.	Description
517 7550	Compound Master 220 V/1200 W cpl with nozzle set
517 7567	Compound Master 110 V/1200 W cpl with nozzle set

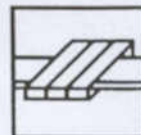




BELT CARE 皮帶保養

HOT VULCANISING PRODUCTS FOR CONVEYOR BELTS WITH FABRIC PLYS

熱硫化修補產品，適用於帶布層的輸送帶



REMA SPLICE

Uncured cover rubber 未硫化橡膠覆蓋層
(500 mm wide / 10 kg roll)

Standard Quality Ref.No.	"V"-Quality Ref.No.	"S"-Quality Ref.No.	Thickness mm
538 0000			2, 3, 4, 5, 6
	538 0158		2, 3, 4, 5, 6
		538 0103	2, 3, 4, 5, 6

Uncured intermediate rubber 未硫化中間層用橡膠
(500 mm wide / 5 kg roll)

Standard Quality Ref.No.	"V"-Quality Ref.No.	Thickness mm
538 0309		0,5
	538 0165	0,5
	538 0172	1,0

Uncured rubberized fabric 未硫化布織物
(1000 mm wide / 10 m roll)

Ref.No.	Article	Width mm	Thickness mm
538 0354	Fabric EP 160	1000	1,4
538 0361	Perlon-Dreher fabric N 10	1000	0,9

Heating solutions 加熱溶液

Ref.No.	Description	"S"-Quality	"V"-Quality	Contents
538 1188	Heating Solution S	•		1 kg
538 1229	Heating Solution S	•		6 kg
538 1236	Heating Solution S	•		12 kg
538 1391	Heating Solution HCR-1		•	1 kg
538 1305	Heating Solution HCR-1		•	12 kg
525 1043	Hardener UT-R 20			40 g
538 1607	Heating Solution S4	•	CFC-free	700 g
525 1067	Hardener E 40			30 g

Accessories: 附件

Ref.No.	Description
538 0990	Shirting (silicone paper) 襯墊
538 1009	Pressure compensation cloth 壓力補償對布

Note:

Uncured rubber must be stored at conditions in accordance with DIN 7716 未硫化橡膠必須要根據DIN7716規定存放

"S"-Quality = fire resistant and anti-static 耐燃及抗靜電

"V"-Quality = self-extinguishing and anti-static 自熄及抗靜電



總經銷



SWR

三五橡膠廠股份有限公司

San Wu Rubber Mfg. Co., Ltd.

總公司
及工廠 / 彰化縣和美鎮彰美路二段106號

電話：(04)7355142~6

傳真：(04)7353802

台北辦事處 / 台北市太原路107號3F

電話：(02)25559820

傳真：(02)25567847

台北門市部 / 台北市太原路107號

電話：(02)25552325~6

傳真：(02)25567847

桃園加工廠 / 桃園市鹽庫街10號

電話：(03)3262070~2

傳真：(03)3258432

台南營業所 / 台南市公園路327-1號

電話：(06)2279955~6

傳真：(06)2209610

高雄加工廠 / 鳳山市鞏汽路9號

電話：(07)7132908

傳真：(07)7719959

花蓮加工廠 / 花蓮市美工七街4號

電話：(03)8234061~3

傳真：(03)8232386



STAHLGRUBER

Otto Gruber
GmbH & Co